

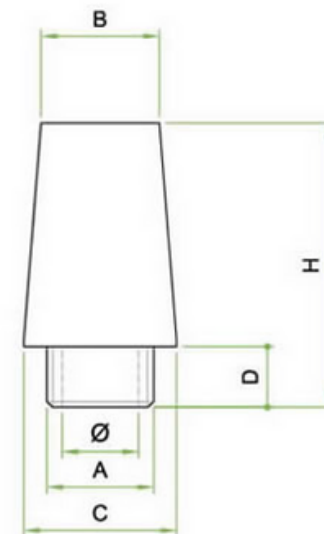
# SCI

Silenziatore SCI conico integrale dimensioni maxi in bronzo sferico sinterizzato  
*Sintered spherical bronze integral maxi silencer.*


**CARATTERISTICHE / FEAUTURES**

Fluido: Aria  
 Filtrazione: 50  
 Pressione d'esercizio: 1 MPa 10 bar  
 Temperatura d'esercizio -20 ° C + 150° C  
 Tolleranze: ISO 2768 C

Bronzo sinterizzato / *Sintered bronze*  
 AF 50 DIN 30 910 T2 CuSn10



Unità di misura espressa in millimetri./ *Unit of measurement expressed in millimeters.*

Codice	Articolo	A	Diam	B	C	D	H
214	SCI 1" ¼	1" ¼	33,0	34,0	45,0	16,5	84,0
215	SCI 1" ½	1" ½	37,0	38,5	53,0	16,5	95,0
216	SCI 2"	2"	48,0	46,0	65,0	20,0	106,0
217	SCI 2" ¼	2" ¼	55,0	50,0	72,0	22,0	108,0
218	SCI 2" ½	2" ½	64,0	66,0	82,0	22,0	110,0