

SIC

Silenziatore integrale in bronzo sferico sinterizzato con taglio cacciavite in testa.

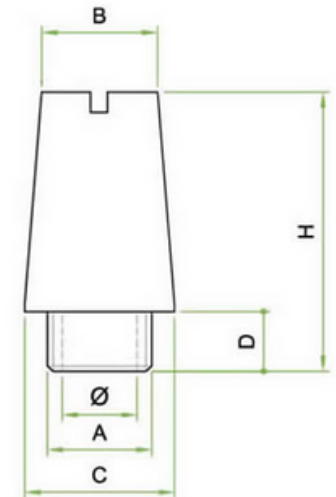
Sintered spherical bronze integral silencer with screwdriver cutting head



CARATTERISTICHE / FEATURES

Fluido: Aria
 Filtrazione: 50
 Pressione d'esercizio: 1 MPa 10 bar
 Temperatura d'esercizio -20 ° C + 150° C
 Tolleranze: ISO 2768 C

Bronzo sinterizzato / Sintered bronze
 AF 50 DIN 30 910 T2 CuSn10



Unità di misura espressa in millimetri./ Unit of measurement expressed in millimeters.

Codice	Articolo	A	Diam	B	C	D	H
202	SIC 1/8	1/8"	4,0	8,0	11,0	5,5	21,0
203	SIC 1/4	1/4"	6,0	10,5	14,0	8,5	27,0
204	SIC 3/8	3/8"	9,0	15,0	18,0	11,0	36,0
205	SIC 1/2	1/2"	11,0	19,0	24,0	11,0	44,0
206	SIC 3/4	3/4"	17,0	23,5	30,0	13,0	65,0
207	SIC 1	1"	22,0	26,5	36,0	15,0	75,0