

STI

Silenziatore STI integrale a tappo con taglio cacciavite in bronzo sferico sinterizzato

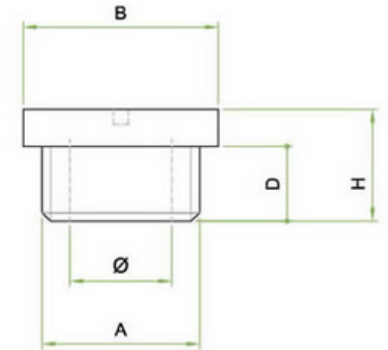
Sintered spherical bronze cap silencer with screwdriver cutting



CARATTERISTICHE / FEATURES

Fluido: Aria
 Filtrazione: 50
 Pressione d'esercizio: 1 MPa 10 bar
 Temperatura d'esercizio -20 ° C + 150° C
 Tolleranze: ISO 2768 C

Bronzo sinterizzato / Sintered bronze
 AF 50 DIN 30 910 T2 CuSn10



Unità di misura espressa in millimetri./ Unit of measurement expressed in millimeters.

Codice	Articolo	A	Diam	B	D	H
426	STI 1/8	1/8"	4,5	11,5	6,0	10,0
427	STI 1/4	1/4"	7,0	14,0	8,0	12,0
428	STI 3/8	3/8"	11,0	19,0	8,0	12,0