

# SPPE

Silenziatore plastica statico con cartuccia in politene sinterizzato.

*Dynamic Self-cleaning plastic silencer*



## CARATTERISTICHE / FEATURES

Fluido: Aria

Filtrazione: 50

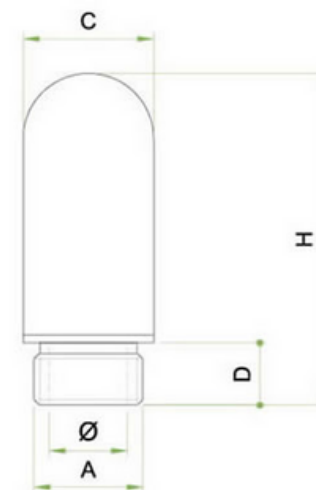
Pressione d'esercizio: 10 bar

Temperatura d'esercizio : -20° C. +80° C

Tolleranze: ISO 2768 C

Filtro - Politene HDPE sinterizzato

Corpo - Nylon 6  
 Resina acetlica  
 Acetalic resin



Unità di misura espressa in millimetri./ Unit of measurement expressed in millimeters.

Codice	Articolo	A	Diam	C	D	H
525	SPPE M 5	M 5	3,0	7,5	4,0	24,5
526	SPPE 1/8	1/8"	5,0	13,0	7,0	33,5
527	SPPE 1/4	1/4"	6,5	17,0	8,0	40,0
528	SPPE 3/8	3/8"	10,5	25,0	11,0	65,0
529	SPPE 1/2	1/2"	12,0	25,0	11,0	71,0
530	SPPE 3/4	3/4"	16,0	37,0	15,5	138,0
531	SPPE 1	1"	22,0	47,5	19,0	157,0

# SPPE

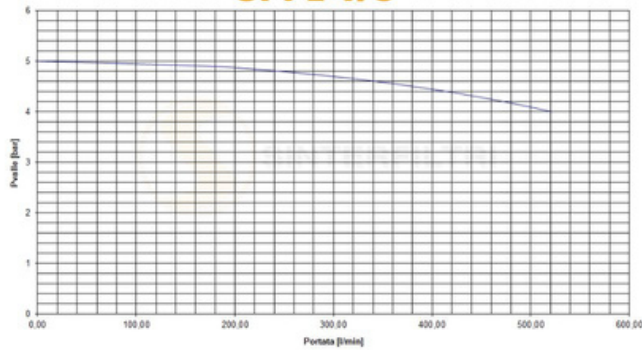
Livello di rumore / noise level dB 5 BAR

1/8	1/4	3/8	1/2	3/4	1
83.6	86.8	88.3	91.7	97.5	105

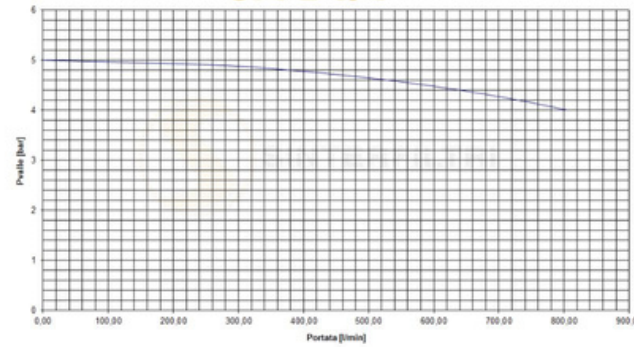


Prove di flusso / flow test

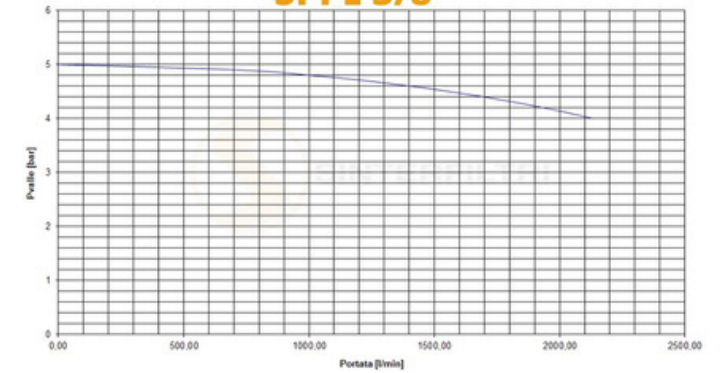
**SPPE 1/8**



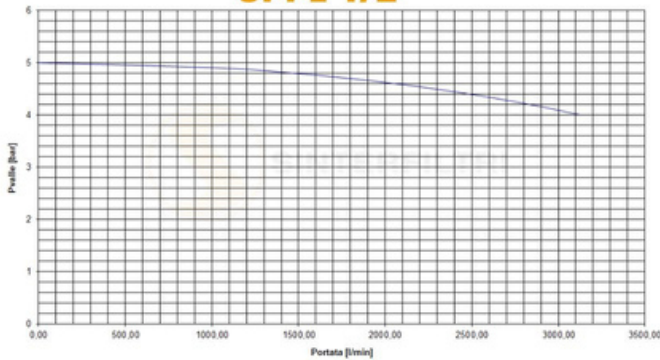
**SPPE 1/4**



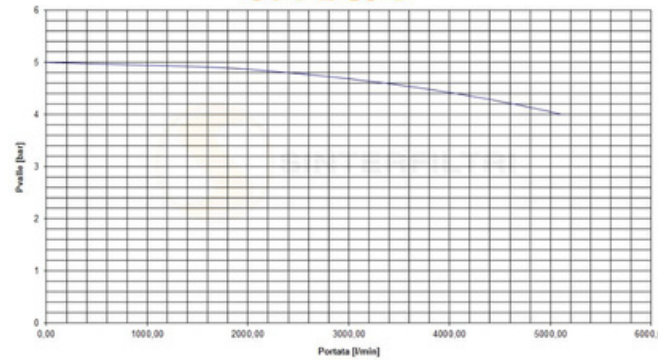
**SPPE 3/8**



**SPPE 1/2**



**SPPE 3/4**



**SPPE 1"**

