

SPPE

Silenziatore plastica statico con cartuccia in politene sinterizzato.

Dynamic Self-cleaning plastic silencer

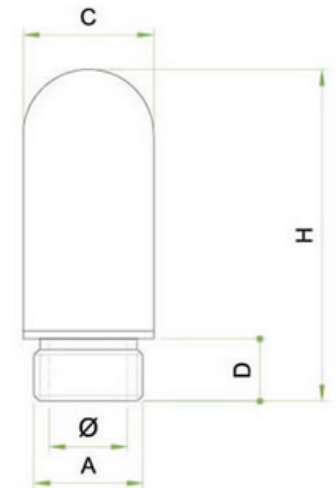


CARATTERISTICHE / FEATURES

Fluido: Aria
 Filtrazione: 50
 Pressione d'esercizio: 10 bar
 Temperatura d'esercizio : -20° C. +80° C
 Tolleranze: ISO 2768 C

Filtro - Politene HDPE sinterizzato

Corpo - Nylon 6
 Resina acetilica
 Acetalic resin



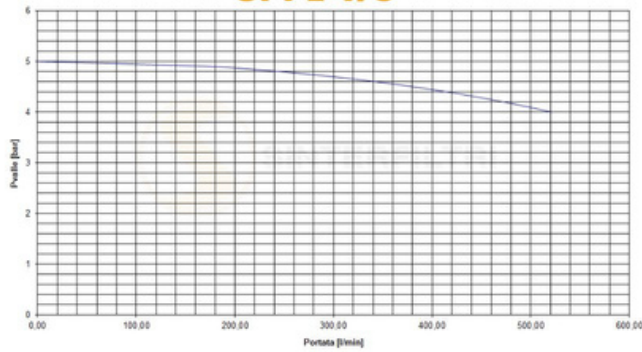
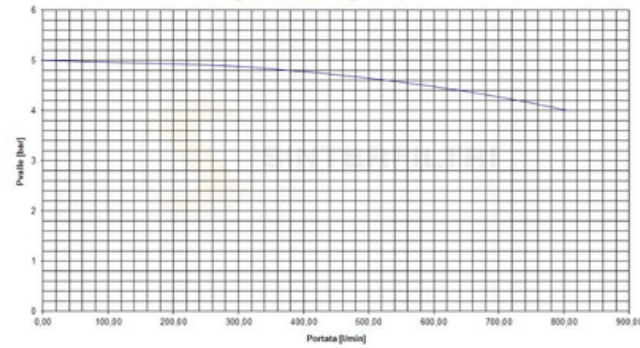
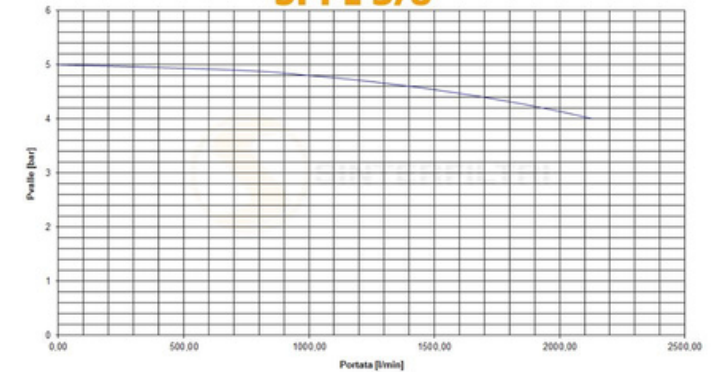
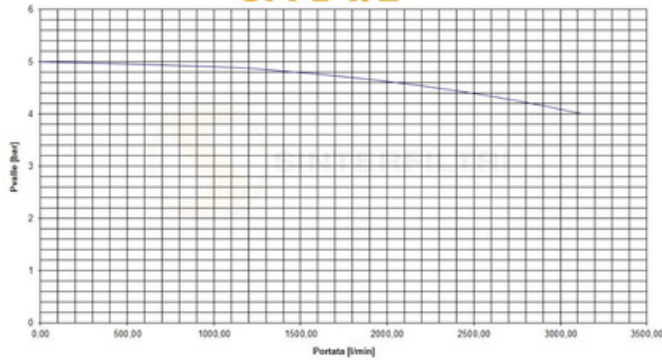
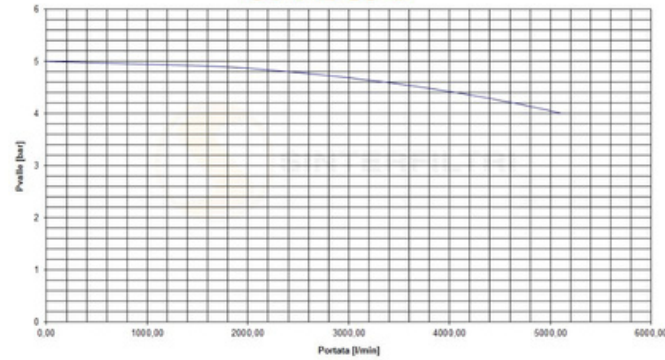
Unità di misura espressa in millimetri - tolleranze rif. normativa En-22768 ISO-2768-c

Codice	Articolo	A	Diam	C	D	H
525	SPPE M 5	M 5	3,0	7	4,5	25
526	SPPE 1/8	1/8"	5,0	13,0	7,0	32
527	SPPE 1/4	1/4"	6,5	17,0	8,5	39
528	SPPE 3/8	3/8"	10,5	25,0	11,0	64
529	SPPE 1/2	1/2"	12,0	25,0	11,5	70
530	SPPE 3/4	3/4"	16,0	37,0	15	140
531	SPPE 1	1"	22,0	48	19,5	159

SPPE

Livello di rumore / noise level dB 5 BAR

1/8	1/4	3/8	1/2	3/4	1
83.6	86.8	88.3	91.7	97.5	105


Prove di flusso / flow test
SPPE 1/8

SPPE 1/4

SPPE 3/8

SPPE 1/2

SPPE 3/4

SPPE 1"
