

# SBZ

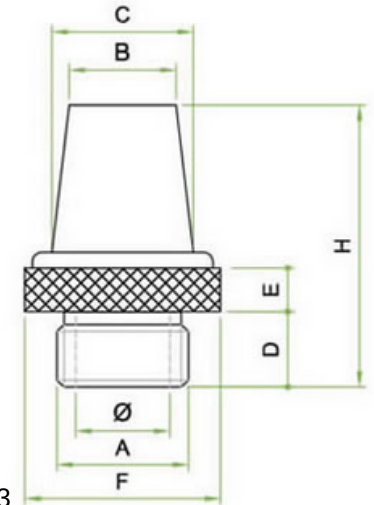
Silenziatore conico in bronzo sferico sinterizzato ribattuto su base circolare zigrinata ottone. Filettatura GAS-BSP  
*Conical silencer replied on sintered spherical bronze knurled brass circular base. GAS-BSP thread*


**CARATTERISTICHE / FEATURES**

Fluido: Aria  
 Filtrazione: 50  
 Pressione d'esercizio: 1 MPa 10 bar  
 Temperatura d'esercizio -20 ° C + 150° C  
 Filettatura: GAS-BSP rif. UNI EN ISO 228-1:2003

Bronzo sinterizzato / Sintered bronze  
 AF 50 DIN 30 910 T2 CuSn10

Ottone / Brass  
 CW 614 N UNI EN 12164 CuZn39Pb3



Unità di misura espressa in millimetri - tolleranze rif. normativa En-22768 ISO-2768-c

SCIP N. 435e388b-36a1-4a78-b7e6-8d712ff525f3

Codice	Articolo	A	Diam	B	C	D	E	F	H
162	SBZ 1/8	1/8"	6,0	8,5	9,0	7,0	4,0	13,0	27,0
163	SBZ 1/4	1/4"	8,5	11,0	11,0	8,0	4,5	16,0	34,0
164	SBZ 3/8	3/8"	11,5	14,0	13,5	8,0	5,0	19,0	41,0
165	SBZ 1/2	1/2"	15,0	17,0	18,0	10,0	5,0	24,0	46,0
166	SBZ 3/4	3/4"	20,0	21,0	25,0	10,0	5,0	30,0	56,0
167	SBZ 1	1"	26,0	26,5	31,0	10,0	6,0	38,0	66,0

# SBZ



Livello di rumore / noise level dB 6 BAR

1/8	1/4	3/8	1/2	3/4	1
75	81	82	85		

Livello di rumore / noise level dB 4 BAR

1/8	1/4	3/8	1/2	3/4	1
70	75	78	81	83	84

**Prove di flusso / flow test**
