

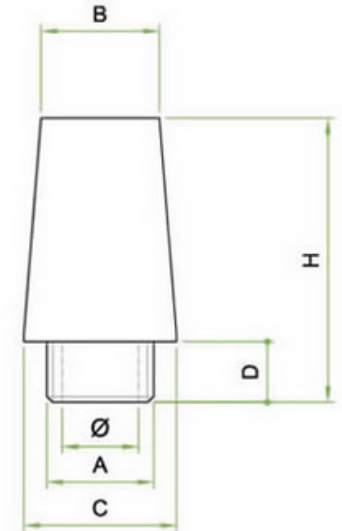
SCI

Silenziatore SCI conico integrale dimensioni maxi in bronzo sferico sinterizzato
Sintered spherical bronze integral maxi silencer.


CARATTERISTICHE / FEATURES

Fluido: Aria
 Filtrazione: 50
 Pressione d'esercizio: 1 MPa 10 bar
 Temperatura d'esercizio -20 ° C + 150° C
 Filettatura: GAS-BSP rif. UNI EN ISO 228-1:2003

Bronzo sinterizzato / Sintered bronze
 AF 50 DIN 30 910 T2 CuSn10



Unità di misura espressa in millimetri - tolleranze rif. normativa En-22768 ISO-2768-c

| Codice | Articolo | A | Diam | B | C | D | H |
|--------|----------|------|------|------|------|------|-------|
| 214 | SCI 1" ¼ | 1" ¼ | 33,0 | 34,0 | 45,0 | 16,5 | 84,0 |
| 215 | SCI 1" ½ | 1" ½ | 37,0 | 38,5 | 53,0 | 16,5 | 95,0 |
| 216 | SCI 2" | 2" | 48,0 | 46,0 | 65,0 | 20,0 | 106,0 |
| 217 | SCI 2" ¼ | 2" ¼ | 55,0 | 50,0 | 72,0 | 22,0 | 108,0 |
| 218 | SCI 2" ½ | 2" ½ | 64,0 | 66,0 | 82,0 | 22,0 | 110,0 |